



**Building Infrastructures
for the Future**





Contents

About STEC	04
Milestones	06
Major Projects	08
Quality Management	16
Safety Management	18
Social Responsibility	20
International Markets	21

About STEC

Established in 1996, Shanghai Tunnel Engineering Co (Singapore) Pte Ltd ("STEC") is a leading civil engineering and construction firm. In over two decades, we have grown from a specialist tunnel subcontractor to one of the top main contractors in Singapore.

Our clients have trusted us to build many large-scale infrastructures in Singapore. To date, we have successfully undertaken and completed projects for Land Transport Authority (LTA), Public Utilities Board (PUB), and Marina Bay Sands (MBS).

Our involvement in all the major MRT lines, from North East Line and Downtown Line to Thomson East Coast Line and Cross Island Line, is a testament to our client's confidence in our technical capabilities and experience in handling projects with high complexity.

26 years

in the construction
industry of Singapore

>58 km

bored tunnels
completed

109

safety and quality
awards





Leading the Industry
Setting New Standards
Growing with our Clients

Milestones

With the trust of our clients and the support from our people and partners, we have reached significant milestones in our journey of becoming a leading infrastructure firm.



1996

Established in Singapore



1998

Awarded LTA Subcontracts

North-East Line C703, C704,
C708 and C810



2000

**First Project as a Design & Build
Main Contractor in Singapore**

PUB Deep Tunnel Sewerage
System (DTSS) T-01



2001

**First LTA Project as a
Main Contractor in Singapore**

Circle Line Stage 1 C825



2002 - 2004

**Awarded 1 LTA Subcontract
and 2 LTA Joint Venture
Main Contracts**

- » Circle Line Stage 2 C822
- » Circle Line Stage 3 C852
- » Circle Line Stage 4 & 5 C855



2008

**First Projects as an
Independent Main Contractor**

- » Marina Bay Sands Integrated Resort
- P8402 Bayfront Infrastructure Project
- » Downtown Line Stage 1 C902



2009 - 2011

**Awarded 4 LTA Main Contracts
First Viaduct Project in Singapore**

- » Downtown Line Stage 2 C920
- » Downtown Line Stage 3 C923A
- » North-East Line C713
- » Tuas West Extension C1688



2013 - 2017

**Awarded 1 PUB Contract
and 4 LTA Main Contracts**

- » Thomson-East Coast Line
- T206, T225, T305 and T310
- » PUB DTSS T-11



2018 - 2021

**Awarded 1 PUB Contract and
4 LTA Main Contracts**

- » North South Corridor N109A
- » Jurong Region Line J102
- » Underground Infrastructure T316
- » PUB TWRPPL Contract 1
- » Cross Island Line CR102

We build a better future through infrastructures that **broaden spaces, reduce distances** and **connect people**.



Major Projects

From underground spaces and viaducts to metro stations and sewerage tunnels, STEC is experienced in building a wide range of civil infrastructures.

We continuously build upon our existing methods, enabling us to achieve ever-improving productivity and safety. Our track record of successful completion of projects demonstrates our technical expertise, advanced technology, and enduring commitment to delivering safe and innovative construction solutions.



01

**DTSS T-01****Deep Tunnel Sewerage System Phase 1**

Client: Public Utilities Board
 Tunnel: 5.8 km long with 6 m I.D.
 Contract Value: S\$80.6 million
 Contract Period: Jan 2000 – Jun 2005

- STEC's first design and build project.
- Joint venture with Woh Hup.
- New Austrian tunneling method and tunnel boring method.

02

**CCL1 C825****Promenade, Esplanade, Bras Basah and Dhoby Ghaut Stations and Tunnels**

Client: Land Transport Authority
 Tunnel: 3.2 km long with 5.8 m I.D.
 Contract Value: S\$343.9 million
 Contract Period: Aug 2001 – Jan 2006

- Featured 3.2 km TBM tunnels, 0.6 km C&C tunnel and 110 m overrun tunnel using SCL method for Circle Line 1.
- Two mixed-face Earth Pressure Balance (EPB) machines.

**BCA Construction Excellence Award 2010**

03

**CCL3 C852****Serangoon Interchange Station and Tunnels**

Client: Land Transport Authority
 Tunnel: 3.8 km long with 5.8 m I.D.
 Contract Value: S\$155.9 million
 Contract Period: Aug 2003 – Dec 2007

- A build only project with Woh Hup and Alpine Mayreder.
- Construction of underground station for Circle Line 3.
- Two EPB machines.

04

**CCL4 C855****Holland Village, Buona Vista, One-North and Kent Ridge Stations and Tunnels**

Client: Land Transport Authority
 Tunnel: 8.25 km long with 5.8 m I.D.
 Contract Value: S\$399.9 million
 Contract Period: Aug 2004 – Feb 2009

- Construction of four underground stations for Circle Line 4
- Two EPB machines and two slurry machines.



BCA Construction Excellence Award 2013

05

**P8402****Marina Bay Sands Integrated Resort Development**

Client: Marina Bay Sands Pte Ltd
 Contract Value: S\$167.9 million
 Contract Period: Apr 2008 – Nov 2011

- A build only project
- Construction of basement retail concourse, car park and two-directional, two-line MRT section tunnels underneath.

06

**DTL1 C902****Promenade Stations and Tunnels**

Client: Land Transport Authority
 Tunnel: 1.12 km long with 5.8 m I.D.
 Contract Value: S\$230.9 million
 Contract Period: Aug 2008 – Sep 2013

- A design and build project comprising the extension of existing Promenade station and construction of tunnels.
- One EPB machine.

07

**DTL2 C920****Newton Stations and Tunnels**

Client: Land Transport Authority
 Tunnel: 5.32 km long with 5.8 m I.D.
 Contract Value: S\$355.7 million
 Contract Period: Aug 2009 – Jul 2015

- A design and build project involving an underground station and four tunnels.
- Pipe Jacking method for a cable tunnel.
- Four EPB machines.



BCA Construction Excellence Award 2017

08

**C713****North East Line Extension**

Client: Land Transport Authority
 Contract Value: S\$8.16 million
 Contract Period: Oct 2011 – Dec 2014

- A build only project for a 48m C&C tunnel and a two-tier box tunnel linked to an existing parking tunnel.
- Scope of works include traffic turn pouring, temporary retaining structures, soil excavation and support, tunnels and the main structure.

09

**C923A****Downtown Line Stage 3 Tunnels**

Client: Land Transport Authority
 Tunnel: 4.76 km long with 5.8 m I.D.
 Contract Value: S\$91.1 million
 Contract Period: Aug 2011 – Dec 2016

- Construction of tunnels between Tampines East Station and Upper Changi Station, TBM launching shaft, eight cross passages
- Two EPB machines.

10

**C1688****Tuas West Extension**

Client: Land Transport Authority

Viaduct: 3.65 km long

Contract Value: S\$190.5 million

Contract Period: Nov 2011 – Jul 2016

- STEC's first viaduct project in Singapore.
- One elevated 3-storey interchange Gul Circle station and 3.05 km elevated MRT viaduct.
- A further 600 m of elevated viaduct for the Tuas South Extension.



BCA Construction Excellence Award 2018

11

**T206****Thomson Line Tunnels**

Client: Land Transport Authority

Tunnel: 6.15 km long with 5.8 m I.D.

Contract Value: S\$421.5 million

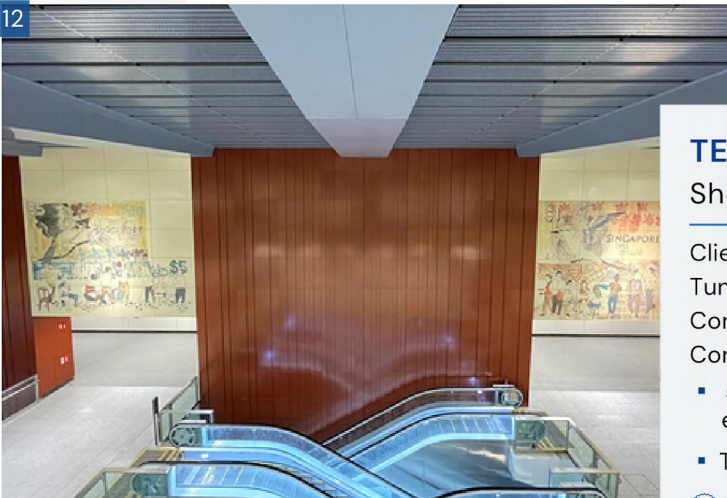
Contract Period: Jul 2013 – Sep 2019

- Tunnels between Woodlands Station & Woodlands South Station and between Woodlands South Station and Sembawang Airbase.
- Three EPB machines and two slurry TBMs



Land Transport Best Managed Project Award 2022

12

**TEL T225****Shenton Way Station and Tunnels**

Client: Land Transport Authority

Tunnel: 2.28 km long with 5.8 m I.D.

Contract Value: S\$368.1 million

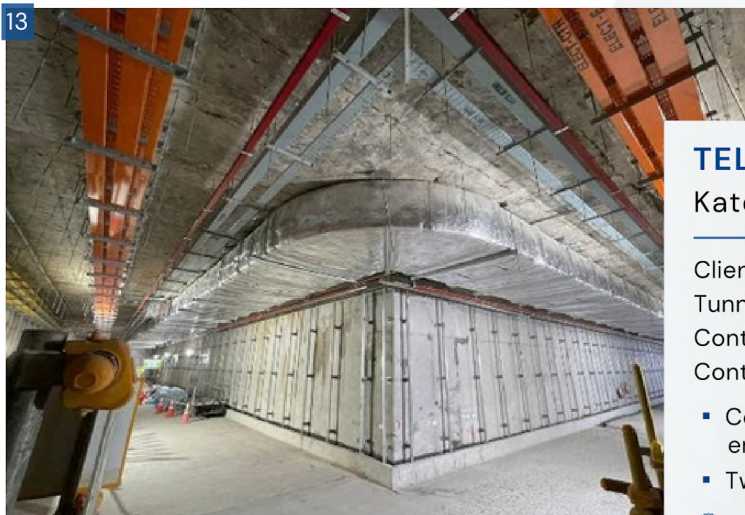
Contract Period: May 2014 – Dec 2022

- 5-storey underground Shenton Way Station with three entrances, tunnels and links to adjacent buildings.
- Two EPB machines.



LTA Construction Challenge Shield Award 2017 & 2018

13



TEL T305

Katong Park Station and Tunnels

Client: Land Transport Authority
 Tunnel: 3.6 km long with 5.8 m I.D.
 Contract Value: S\$293.4 million
 Contract Period: Jan 2016 – Sep 2023

- Construction of underground Katong Park Station with two entrances, bored tunnels and two cross passages.
- Two EPB machines.



LTA ASAC Best Innovation Award 2019

14



TEL T310

Bayshore Station and Tunnels

Client: Land Transport Authority
 Tunnel: 3.6 km long with 5.8 m I.D.
 Contract Value: S\$295.8 million
 Contract Period: Jan 2016 – Sep 2023

- Construction of underground Bayshore Station with five entrances, bored tunnels, one escape shaft and one cross passage
- Three EPB machines.

15



Funan UPL

Underground Pedestrian Linkway

Client: Woh Hup – Obayashi Joint Venture
 Tunnel: 108 m long
 Contract Value: S\$21.2 million
 Contract Period: Aug 2017 – Aug 2021

- Tunnel connecting Funan Mall with City Hall MRT station and surrounding shopping centers.
- STEC's first commercial UPL project with Rectangular Pipe Jacking Methodology (RPJM).
- RPJM improves productivity while minimizing disruption and environmental impact.

16



DTSS T-11

Deep Tunnel Sewerage System Phase 2

Client: Public Utilities Board
 Tunnel: 4.6 km long with 3.3 m I.D. and 6.8 km long with 3 m I.D.
 Contract Value: S\$472.1 million
 Contract Period: Nov 2017 – Nov 2024

- Design and build project consisting of 6 km-long South Main Sewerage Tunnel, a 5.5km long South Linkway Sewerage Tunnel, and 15 working shafts.
- Five slurry TBMs

17



N109A

North-South Corridor

Client: Land Transport Authority
 Tunnel: 800 m long
 Contract Value: S\$615.9 million
 Contract Period: Jan 2019 – Oct 2028

- Road tunnel between Sin Ming Avenue and Ang Mo Kio Avenue 3 featuring a pair of three-lane roads
- Integrated with Teck Ghee Station on Cross Island Line.
- Construction of an underground structure that lays the foundation for a future station and commuter facilities.

18



J102

Choa Chu Kang, Choa Chu Kang West, Tengah Station and Viaducts

Client: Land Transport Authority
 Viaduct: 4.3 km long
 Contract Value: S\$465.1 million
 Contract Period: Sep 2019 – Mar 2026

- Design and construction of three stations with a viaduct for Jurong Region Line
- Addition and alteration works to the existing Choa Chu Kang station on North-South Line, to integrate it with the new JRL station.

19



T316

Underground Infrastructure at Changi Airport

Client: Land Transport Authority
 Tunnel: 3.97 km long with 5.8 m I.D.
 Contract Value: S\$351.7 million
 Contract Period: Oct 2019 – Mar 2031

- Twin bored tunnels from Changi Airport Terminal 5 development to Changi Airport (CGA) Station Terminal 2 North Finger Pier.



CAG Zero Safety Infringement 2021

20



TWRPPL C1

Tuas Water Reclamation Plant Contract 1

Client: Land Transport Authority
 Tunnel: 1.6km long with 6m I.D.
 Contract Value: S\$116 million
 Contract Period: Jul 2021 – Sep 2024

- Construction of tunnel from the proposed Tuas Water Reclamation Plant (TWRP) / Tuas NEWater Factory to existing network in Jurong Island and launching and receiving shafts.
- Installation of twin 2200mm and 1200mm diameter pipelines and appurtenances within the tunnel, pipelaying by cut and cover method, and construction of associated chambers.
- One slurry TBM.

21



CR102

Cross Island Line Phase 1 Tunnels

Client: Land Transport Authority
 Tunnel: 6 km long with 5.8m I.D.
 Contract Value: S\$780 million
 Contract Period: Dec 2021 – Dec 2029

- Tunnels connecting Aviation Park station to Changi East Depot for Cross Island Line
- The project includes 5 bored tunnels, 7 connecting passages as well as 2 sections of open-cut tunnels and a supporting building.
- Four EPB machines.

Quality Management

Quality is an integral part of STEC's business principles. Our Integrated Quality Management approach enables us to provide services and products that meet the needs and exceed the expectations of our clients.

Consistency

Minimize Defects

**Quality Services
for Customers**

Full Compliance

Commitment

Our goal is to never compromise on the quality and compliance of our products and services. Accomplishing this goal requires each individual at STEC to recognize their responsibility to safeguard our quality standards.

Simultaneously, we support every stakeholder to understand that they are empowered to protect our clients and brand.

We have adopted an Integrated Quality Management approach involving the client, sub-contractors, and suppliers, coupled with a stringent in-house Quality Assessment System that has led to greater efficiency during construction.

QUALITY MANAGEMENT CERTIFICATIONS

Our company is registered with the SGS International Certification Services Singapore in Mechanical and Electrical works, Civil Engineering, Underground Construction, General Building Works, and Tendering. In 2018, STEC was awarded the ISO 9001-2015 by SGS International Certification Services Singapore.



Our construction teams understand our guidelines and systematically apply the procedures in their work to ensure consistency and a high standard of engineering and craftsmanship.

Evident in our systems and policies, quality is an integral part of STEC's business principles – guiding our steps to deliver excellence to our clients. It is the core of our pursuit of being trusted as a leading construction company.



QUALITY AWARDS

STEC has received numerous quality awards from government agencies such as Building Construction Authority and Land Transport Authority. These awards exemplify our work ethic and highly developed systems.

2022	LTA Excellence Award Best Managed Rail/Road Infrastructure Project Partner – T206
2021	BCA Construction Excellence Merit Award – T206
2019	LTA Excellence Award Best Managed Rail/Road Infrastructure Project Partner – C1688 BCA Green and Gracious Star Champion Award – Corporate TUCSS Project of the Year Merit Award – T225

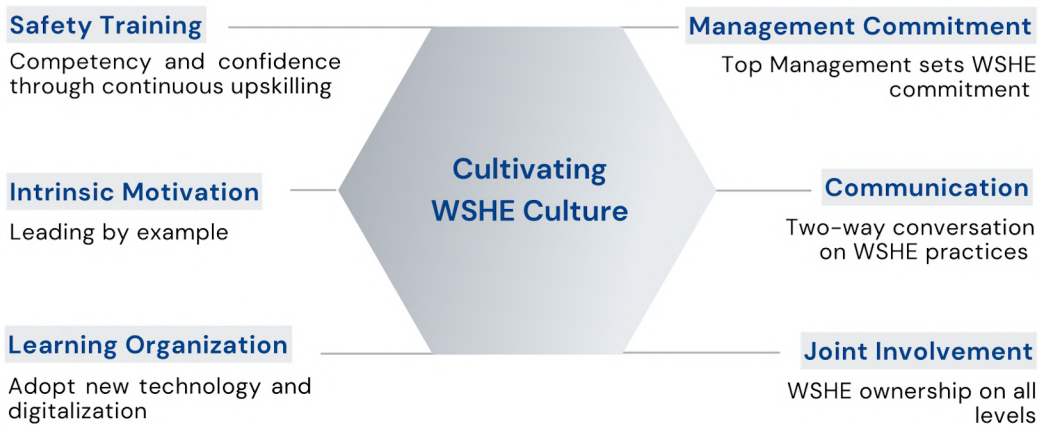


WSHE Management

At STEC, we prioritize the safety and health of our people and the sustainability of our environment. We optimize our Workplace Safety, Health, and Environment (WSHE) management strategy and strengthen our WSHE culture and collaboration to realize a safer workplace and a healthier workforce.

TOTAL WORKPLACE SAFETY, HEALTH, AND ENVIRONMENT

In a safe and healthy workplace, staff of all levels collaborate and work towards protecting and promoting the health, safety, and well-being of all workers and the sustainability of the business. Integrating programs that control risks in the workplace together with health campaigns results in higher productivity, reduction in sickness absence, higher employee retention, increase in financial performance, and better quality of life.



WSHE MANAGEMENT SYSTEM

We employ experienced Safety Officers in all projects, led by a Corporate Safety Manager who directly reports to the Managing Director. These safety professionals are part of a core team responsible for the implementation of our Safety, Health, and Environmental Management System.



VISUALIZATION TECHNOLOGY IN WSHE TRAINING

We have established WSHE training facilities on our project sites. At these training centers, staff can access Virtual Reality (VR) technology that provides realistic simulations of different site-specific hazards. Through VR training on relevant workplace scenarios such as work-at-height and electrical and lifting works, site personnel can attain better situational awareness and gain the skills necessary to prevent accidents and injuries.

PROMOTING WSHE AWARENESS

To attain an accident-free workplace, promoting WSH awareness and communicating our WSH goals is of paramount importance. Our Managing Director and WSHE Committee conduct monthly inspections for all projects. On top of that, we hold an annual corporate WSHE campaign to recognize individual safety efforts and performance. We also launch a WSHE handbook – a comprehensive guide on WSHE best practices. We fully support and strive towards MOM's 'VISION ZERO' and LTA's 'ZERO ACCIDENT MOVEMENT' through the resolve of our top management and the active participation of supervisory staff and workers.



WSHE AWARDS

Our efforts have been commended and recognized by authorities with workplace safety, health, and environment awards. We remain committed to our high standards of WSHE and continue to step up our initiatives and performance as a WSHE role model in the construction industry.

2022	<p>WSH Performance (Silver) Award – Corporate</p> <p>WSH Performance (SHARP) Awards – T225, T305, T310, T316, J102, N109A, T11</p> <p>LTA ASAC Construction Workplace Health Award – T305</p> <p>LTA ASAC Safety Merit Award – T316</p> <p>CAG Zero Safety Infringement – T316</p>
2021	<p>WSH Performance (Silver) Award – Corporate</p> <p>WSH Performance (SHARP) Awards – T225, T305, T310, T316, J102, N109A, T11</p>
2020	<p>WSH Performance (Silver) Award – Corporate</p> <p>WSH Performance (SHARP) Awards – T225, T305, N109A, T11</p> <p>LTA Annual Safety Award Convention (ASAC) Safety Merit Award – T305</p>



Social Responsibility

STEC is committed to making a positive difference in the local community. Through our Corporate Social Responsibility (CSR) programs, we aim to benefit the places where we live and work by sharing knowledge, serving the community, and protecting the environment. We believe in empowering our people to make a meaningful contribution to society and together create a better, more sustainable future.

COMMUNITY

We understand the importance of building healthy and thriving communities. Throughout the years, we have worked towards this goal through partnerships with non-profit organizations. We participated in activities such as befriending seniors, organizing an event for children with chronic illnesses, delivering meals, renovating the homes of elderlies, and donating to charities and their beneficiaries.



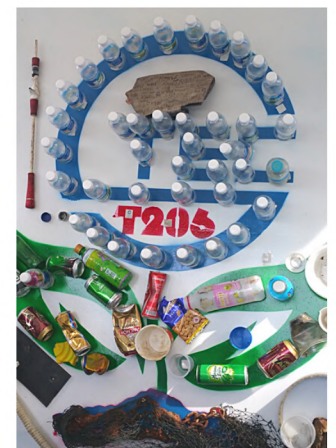
EDUCATION

Our educational initiatives are a part of a corporate commitment to developing the next generation and equipping the youth with relevant skills for their future. We support organizations with programs that enhance understanding of science, arts, literature and more.

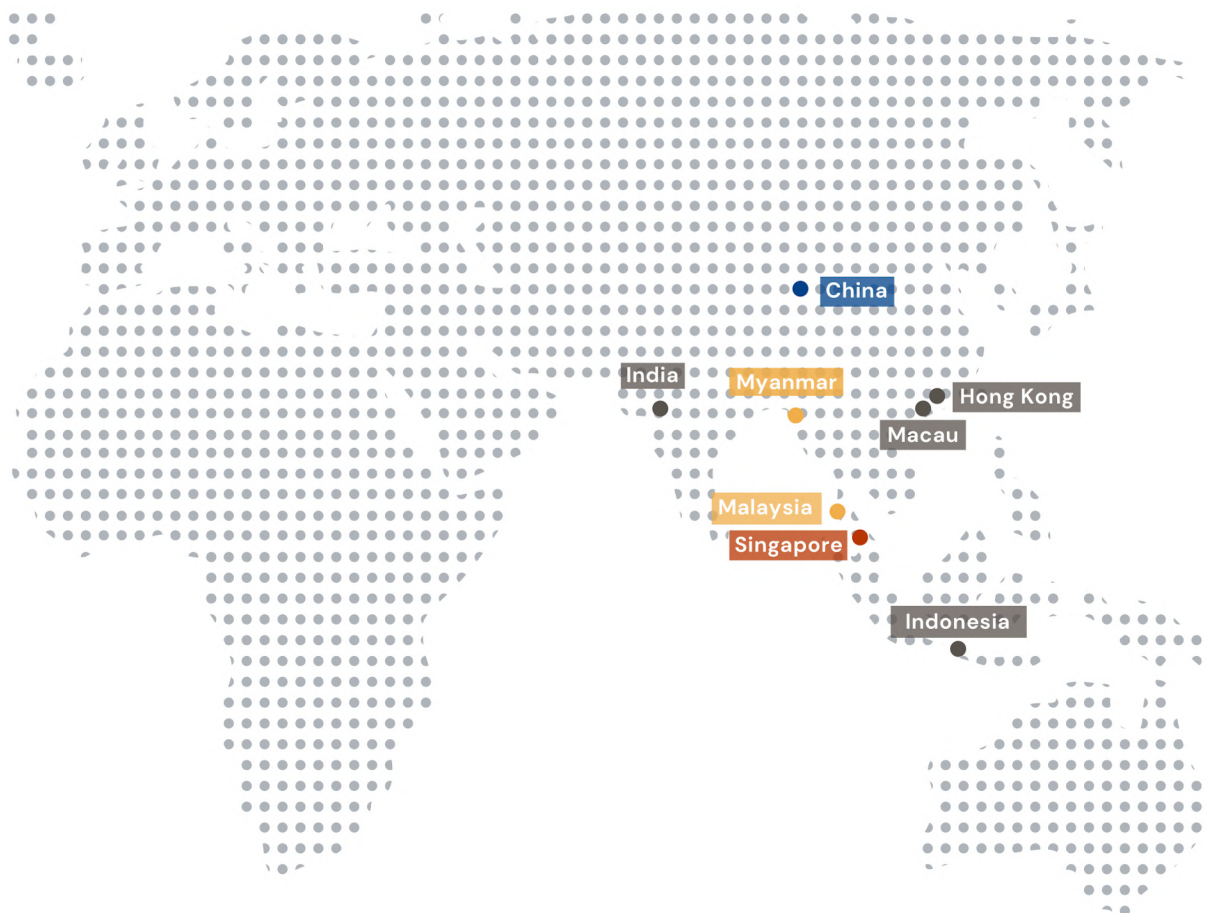


ENVIRONMENT

Our sponsorships and volunteering efforts support conservation and rehabilitation of green spaces. In the spirit of innovation, STEC also partners with organizations that leverage new technologies to improve the way we care for the environment.



International Markets



-  **STEC Headquarter**
-  **STEC Singapore**
-  **STEC Singapore Subsidiaries**
-  **Operated under STEC Singapore**



We provide **solutions** to
urban construction for more
convenient and modern cities
both at home and abroad.





上海隧道工程股份(新加坡)有限公司
SHANGHAI TUNNEL ENGINEERING CO (SINGAPORE) PTE LTD

www.STEC.com.sg



Scan to visit
our website



SINGAPORE

30 Cecil Street #11-08 Prudential Tower
Singapore 049712
Tel: (65) 6392 0060
Fax : (65) 6299 3033

SHANGHAI

No. 1099 South Wan Ping Road
Xuhui District, Shanghai 200323
Tel: (86-21) 5359 9950
Fax: (86-21) 5359 9591